

R-F-M

THE MIDLANDS MART

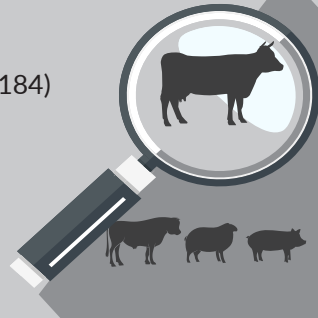
— RUGBYFARMERSMART.COM —

The Charolais Pavilion, Avenue M, Stoneleigh Park,
Kenilworth, Warwickshire CV8 2RG
02476 697731 | www.rugbyfarmersmart.com | 43/139/8013
Office hours: Monday to Friday - 9.00am - 5.00pm
Opening Time: Gates open at 5.30am until further notice

MARKET REPORT FOR MONDAY 22TH JUNE 2026

MARKET AT A GLANCE

PRIME STEERS to 366p & £2540
PRIME HEIFERS to 400p & £2456
PRIME BULLS to 400p & £3175
COWS to 262p & £2206
LAMB SQQ 428.24p/kg (1402 avg £184)
LAMBS to 478p & £270
EWES to £250 (244 avg £172)



WE WILL BE A **RED** MARKET THE FIRST MONDAY
OF EVERY MONTH. THE REMAINING MONDAYS
WILL BE A **GREEN** MARKET

Catalogues & Entry Forms available by post, email or on the website
www.rugbyfarmersmart.com | admin@rugbyfarmersmart.com

**PLEASE COULD ALL VENDORS BOOK IN STOCK,
EITHER BY A QUICK CALL, TEXT OR EMAIL THANK YOU!**

Office: 02476697731 | Email: admin@rugbyfarmersmart.com | Tom: 07774723758

Tim Webster: 07437101163 | Martin Lloyd: 07399794399

Sunday lairage is now open from 9am-3:00pm
Gates close 3:00pm **STRICTLY.**

VET ATTESTATIONS

From 13th April 2024, all producers selling livestock for slaughter will require a Veterinary Attestation, or evidence of membership of a qualifying assurance scheme. Producers should prepare now for the changes Follow the link below to our FAQs for livestock markets and producers to find out more. <https://www.laa.co.uk/news/5126/veterinary-attestations-faqs-for-livestock-markets->

WELFARE STATEMENT

Following a meeting with Warwickshire Trading Standards & the FSA on Monday we have been asked to highlight the Welfare Issues being reported from the Abattoirs regarding Cull Ewes. These mainly relate to MASTITIS & LAMENESS. Condition Score i.e being very thin.

Please remember that an animal must be fit for the intended journey, it should not be ill, injured or severely lame i.e. must be full weight bearing.

These sheep are being rejected at abattoirs around the Country

CELEBRATING FOOD PRODUCERS
& RURAL COMMUNITIES



JOIN US FOR

The Moreton Morrell 2026



Barn Service

Sunday 5 July 2026

Music from 2:30pm | Service at 3:00pm |
Refreshments to follow

Tractors - Animals - Children's Activities

Chesterton Fields Farm, Fosse Way, CV33 9JY




Addington Fund

A voluntary collection will support RABI
(Charity No. 208858) & Addington Fund
(Charity No. 1097092)

RABI[®] 

CATTLE



Prime Cattle -

A tidy show of meat, with bulls and cows seeing a firmer trade throughout, and clean cattle very much a “stand on”. The constant slide of finished cattle prices seems to have slowed, with summer weather starting to aid sales of manufacturing beef.

Prime Steers -

Something for everyone in the steers today, with DJ Hull & Partners selling shapely Limousin bullocks to 366p/kg, just pipping Parry Walters who saw heavyweight Limousin steers to 362p/kg. Pete Jarrom saw Limousins to 338p/kg with AH Blackwell to 326p/kg.

Top grossing steer from the Hull’s selling to £2540 for Limousins, with the Walters stable to £2534, just pipping heavyweight Angus from the Hull’s at £2457.

Prime Heifers -

Wow! A real heifer from Robert and Tom Reeve selling to 400p/kg for Blues, with GR Fountaine selling to 360p/kg and Honesberie Farms selling Limousins to 350p/kg, just pipping Parry Walters to 348p/kg.

Top grossing heifer from the Reeve’s sold to £2456 with Honesberie Farms selling to £2387.

Prime Bulls -

Parry Walters saw super Blue Bulls selling to 400p/kg, with J & R Lowe selling heavyweight Limousins to 398p/kg, with the same home to 390p/kg. Edward Hull sold Limousin bulls to 388p/kg.

Heavyweight bulls from the Lowe stable selling to £3174, with the same home to £3120.

Cows -

A short, sharp show of cows and more wanted weekly!

Top today saw Honesberie Farms with Limousins to 262p/kg on two occasions with PM Wilks to 230p/kg.

Top grossing cow to Honesberie selling to £2206.

Auctioneer Martin Lloyd

STEERS

Top prices per Kilo

Limousin	694kg	366ppk	DJ Hull & Partners, Southminster
Limousin x	700kg	362ppk	DTP Walters & Partners, Rugby
Limousin x	676kg	338ppk	PM Jarrom, Leicester
Limousin x	594kg	326ppk	AH Blackwell, Swadlincote
Angus	696kg	320ppk	DJ Hull & Partners, Southminster

Top prices per Head

Limousin	694kg	£2540	DJ Hull & Partners, Southminster
Limousin x	700kg	£2534	DTP Walters & Partners, Rugby
Limousin x	768kg	£2457	DJ Hull & Partners, Southminster
Angus	722kg	£2289	DJ Hull & Partners, Southminster
British Blue	696kg	£2227	PM Jarrom, Leicester

HEIFERS

Top prices per Kilo

British blue	614kg	400ppk	R & T Reeve Rugby
Limousin	580kg	360ppk	GR Fountaine & Son, Beachampton
Limousin	682kg	350ppk	Honesberie Farms, Southam
Limousin	674kg	348ppk	DTP Walters & Partners, Rugby
Limousin x	512kg	330ppk	AH Blackwell, Swadlincote

Top prices per Head

British Blue	614kg	£2456	R & T Reeve, Rugby
Limousin	682kg	£2387	Honesberie Farms, Southam
Limousin	674kg	£2346	DTP Walters & Partners, Rugby
Limousin x	728kg	£2329	DJ Hull & Partners, Southminster
Charolais	706kg	£2259	DJ Hull & Partners, Southminster



LAMBS 1402 FORWARD

SQQ 428.24P/KG AVG £184 TOP £270

The warning signs had started at the end of last week that the Export demand was starting to falter with Abattoirs not killing on Monday or Tuesday. A wealth of leaner grass lambs out last week also not assisting. Trade today sluggish with buyers given unrealistic buying prices and a few leaving halfway through unable to purchase. Meat and finish lambs still a fast trade but lean undercooked sorts with limited audience. An SQQ of 428p/kg amongst the top in the Country and alongside the northern SQQ results whom are selling younger first draw sorts. Best end lambs today up to 478p/kg for 36kg shape from JM Grace with MG & SM Grindal 42kg at 476p/kg and DS & LE Wadland 40kg at 475p/kg equal with GR Fountaine & Son 40kg 475p/kg. Meat fed lambs regularly over 450p/kg. Fed first cross lambs 420 to 430p/kg although leaner sorts now dipping under 400p/kg which for these lesser dying sorts still represents a deadweight over 860p/kg.

Heavies remain the sort after commodity with home trade short supplied. Meat very very dear. Top today in the weight 478p/kg at 46kg from DS & LE Wadland with FJ Tombs & Son 50kg at 476p/kg and 50kg at 472p/kg with JM Grace 49kg at 470p/kg. Almost all weighted lambs breaking 440p/kg and looking a serious return from start to finish and perhaps dearer on the week.

An all in avg of £184 still a very fast return.

Export Lambs trading to big numbers still and making £204 at 45kg for J Baker & Sons down from Leicester with DS & LE Wadland 44kg at £202 and MG & SM Grindal 42kg at £200. Export lambs with finish still regularly past £190.

Top of the pops though and a new Centre record for genuine Fat Lambs from CW Thomas 61kg to a massive £270!! FJ Tombs 66kg at £267 and DA Ofield £250 and £255.50 at 55kg. Oceans of fed Lambs over £210.

Trade likely affected by this weeks heatwave and we must monitor this next week

Auctioneer: Tom Wrench

It is with sadness that we share the passing of Peter Betteridge, a long standing customer and familiar face at the market. The Funeral will take place at 11am, Monday 29th June at Fillongley Church

LAMB SQQ 428.24 SQQ p/kg

Per Kilo **under 45.5kg**

Texel	36kg	478ppk	JM Grace, Milton Keynes
Texel	42kg	476ppk	MG & SM Grindal, Lutterworth
Beltex	40kg	475ppk	DS & LE Wadland, Daventry
Beltex	40kg	475ppk	GR Fontaine & Son, Beachampton
Texel	42kg	471ppk	MG & SM Grindal, Lutterworth

Per HEAD

Charolais	45kg	£204	J Baker & Sons, Lutterworth
Beltex	44kg	£202	DS & LE Wadland, Daventry
Texel	42kg	£200	MG & SM Grindal, Lutterworth
Beltex	43kg	£200	GR Fontaine & Son, Beachampton
Charolais	44kg	£200	Saffron Estates, Welford

Per Kilo **over 45.5kg**

Beltex	46kg	478ppk	DS & LE Wadland, Daventry
Charolais	50kg	476ppk	FJ Tombs & Son, Shabbington
Charolais	50kg	472ppk	FJ Tombs & Son, Shabbington
Texel	49kg	470ppk	JM Grace, Milton Keynes
Beltex	46kg	470ppk	GR Fontaine & son, Beachampton

Per HEAD

Charolais	61kg	£270	CW Thomas, Coventry
Charolais	66kg	£267	FJ Tombs & son, Bucks
Texel	56.5kg	£255.5	DA Ofield, Daventry
Texel	55kg	£250	DA Ofield, Daventry
Charolais	53kg	£244.50	J Baker & Sons, Lutterworth



CULL EWES: 244 FORWARD

AVG £172 TOP £250

Numbers short in the ewes this week nationwide. A strong trade for the better bred Continentals topping at £250 for a Continental x from LG Russell & Son who also got £208 and £204. CW Thomas sold Charollais to £230, £220 x 2 and £206. GR Fountaine & Son saw Texels at £222 twice with WJ Pearson & Son selling to £224 and £222 for good Texels. Suffolks topped at £202 for B Burrows & Son with MFH Farming at £200 and WJ Pearson & Son to £200. Small number of rams topping at £218 for a Charollais from KW Ormond & Son. Mules topped at £184 from DJ & BJ Leadbeater. Mules with frame £150-£155 with smaller, lightweight Mules £138-£145.

Ewes in general an easy sell with those strong meated (not fat) ewes of any bred a real flier. More ewes needed

Auctioneer: Tom Wrench

EWES

Continental x	£250	LG Russell & Son, Stratford	Texel	£222	WJ Pearson & Son, Towcester
Charollais	£230	CW Thomas, Coventry	Texel	£222	GR Fountaine & Son, Beachampton
Texel	£224	WJ Pearson & Son, Towcester	Texel	£222	GR Fountaine & Son, Beachampton



4
YEARS

Farm insurance, the way it should be

We're an independent, family run insurance broker that prides itself on long term relationships with clients. This is supported by our team's extensive knowledge and experience of farming and the countryside. Covering the Home Counties, Midlands, South East and South West, we are insurance partners for your farm, agri-business or equestrian enterprise.



Farm & Equine **01865 844985**
www.county-insurance.co.uk/farms

County
Insurance Services 



Rix OAKLEYS



**Your Local
Independent Farm
Fuels Supplier**



Gas Oil
& Diesel



Lubricants
& Additives



Fuel Tanks



Heating Oil



AdBlue®

Call for a quote on:

01675 437557

www.rix.co.uk | midlands@rix.co.uk

T.A.R HIRE

FOR HIRE:

○ 10 & 14 TON REAR MUCK
SPREADERS

○ 12 TON TRAILERS WITH
SILAGE SIDES

○ ROAD SWEEPER

○ FLAT TRAILERS

○ GRASS TOPPERS

○ CONTRACT MUCK

SPREADING SERVICES

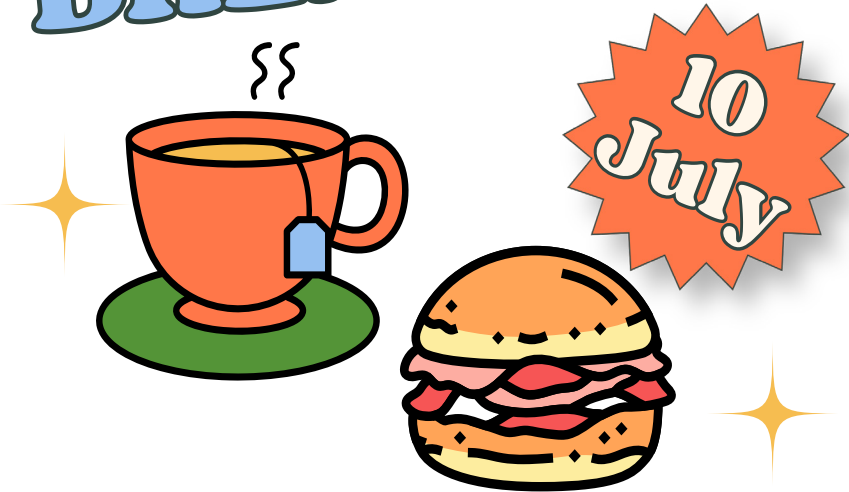
CONTACT:

DAVENTRY (ROB) - 07801791212

HINCKLEY (ALAN) - 07802951179

ORGANISED BY
THE WARWICKSHIRE BREAKFAST BUTTY VAN PROJECT

FARMER'S BREAKFAST



**JOIN US FOR A BACON ROLL AND A
CUPPA FROM 10:30AM TO 12NOON**

**ROSEMARY & NICK GASSON, ALKERTON GROUNDS,
ALKERTON HILL, BALSCOTE, OX15 6JS**

Warwickshire Breakfast Butty Van is an initiative from the Methodist
Church West Midlands District Borderlands Ecumenical Chaplaincy
Supported by Addington Fund

Annual Sale of Straw in the Swath.

A total 615.5 Acres of Barley and Wheat Straw

To include:

108 Acres Winter Wheat Straw at Daventry, 162 Acres Winter Wheat Straw at Flore,
162 Acres Winter Wheat Straw at Loughborough, 24 Acres Winter Wheat Straw at Rugby,
86.5 Acres Winter Barley Straw at Flore, 73 Acres Winter Wheat Straw at Flore.

Together with:

35 Acres Standing Maize at Lutterworth.

For a detailed catalogue please visit www.howkinsandharrison.co.uk/auctions
or contact James Butlin on 07570 586738.

For sale by auction on Thursday 2nd July at 6.30pm
at Lutterworth RFC, Ashby Lane, Bitteswell, Leicestershire, LE17 4LW.

TELEPHONE 01788 564746 / 07921 511852

EMAIL dispersal.sales@howkinsandharrison.co.uk

7-11 Albert Street, Rugby, CV21 2RX



HARRIS & CLARKE CHARTERED ACCOUNTANTS

...Specialising In Agriculture...

**Our team of staff has many years of
experience in dealing with the accountancy
and taxation affairs of farmers, landowners
and agricultural contractors**

**For further information or a free no
obligation meeting please contact**

John Harris

**7 Billing Road, Northampton, NN1 5AM
Telephone 01604 62274
www.harrisandclarke.co.uk**



Have Wool?

Laurence Pierce (Wool Merchants)

One of the largest and best known wool buyers require 2026 wool clips

Please contact your local agent
Steve Eales on 07732213278

Wool collection commences june
speedy payment in full

prices for 2026 greatly increased
for clean dry wool



Here to listen and support you

Contact The Farming Community Network
to speak in confidence with a sympathetic
person who understands farming life.

Call 03000 111 999

Email help@fcn.org.uk

(Helpline open 7am-11pm, 365 days of the year)

FCN | THE FARMING
COMMUNITY
NETWORK

Berryfields Farm
**BERRYSTOCK
FEEDS**



**PROVIDING CATTLE
AND SHEEP FEEDS FOR
THE MODERN MARKET**



Do You Want?

- ◆ HIGH PERFORMANCE
- ◆ COST EFFECTIVE
- ◆ FULLY ASSURED
- ◆ COMPLETE FEEDS
- ◆ INTEGRATED FEEDING SYSTEMS

Then contact **BERRYSTOCK FEEDS:**

Tel: 01788 890320 E-Mail: admin@berryfieldsfarm.co.uk

Web: www.berrystockfeeds.co.uk

UFAS 350

DO IT THE BERRYSTOCK WAY



**WE COVER SMALL FARMS,
LARGE FARMS AND
EVERYTHING IN BETWEEN**

***From sheep farmers to arable farmers.
Flower growers to poultry farmers.***

We're proud to insure over 70% of UK farms with our Farm Select insurance. But we want more farms to benefit from our great cover and local service. That's why we've introduced Farm Essentials insurance - designed to meet the needs of smaller farms.

As your local agency, we are close by and can provide expert advice and hands-on support when you need it.

**Call Coventry Office
on 02478 444510**

**NFU Mutual, 6 Eastwood Business Village,
Harry Weston Road, Hinkley Business Park,
Coventry, CV3 2JB**



NFU Mutual
| INSURANCE | PENSIONS | INVESTMENTS